

Trekking Route

Type of route: Trekking

Length of one direction: 9.7 km

Duration: 6 hours

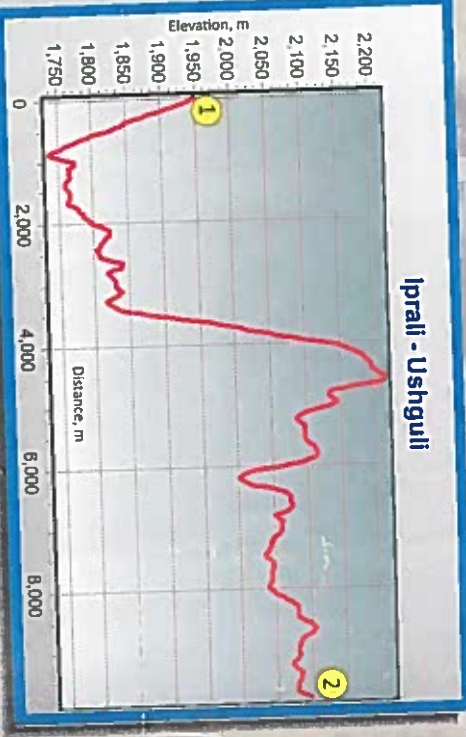
Altitude: At the start - 1950 m

At the finish - 2160 m

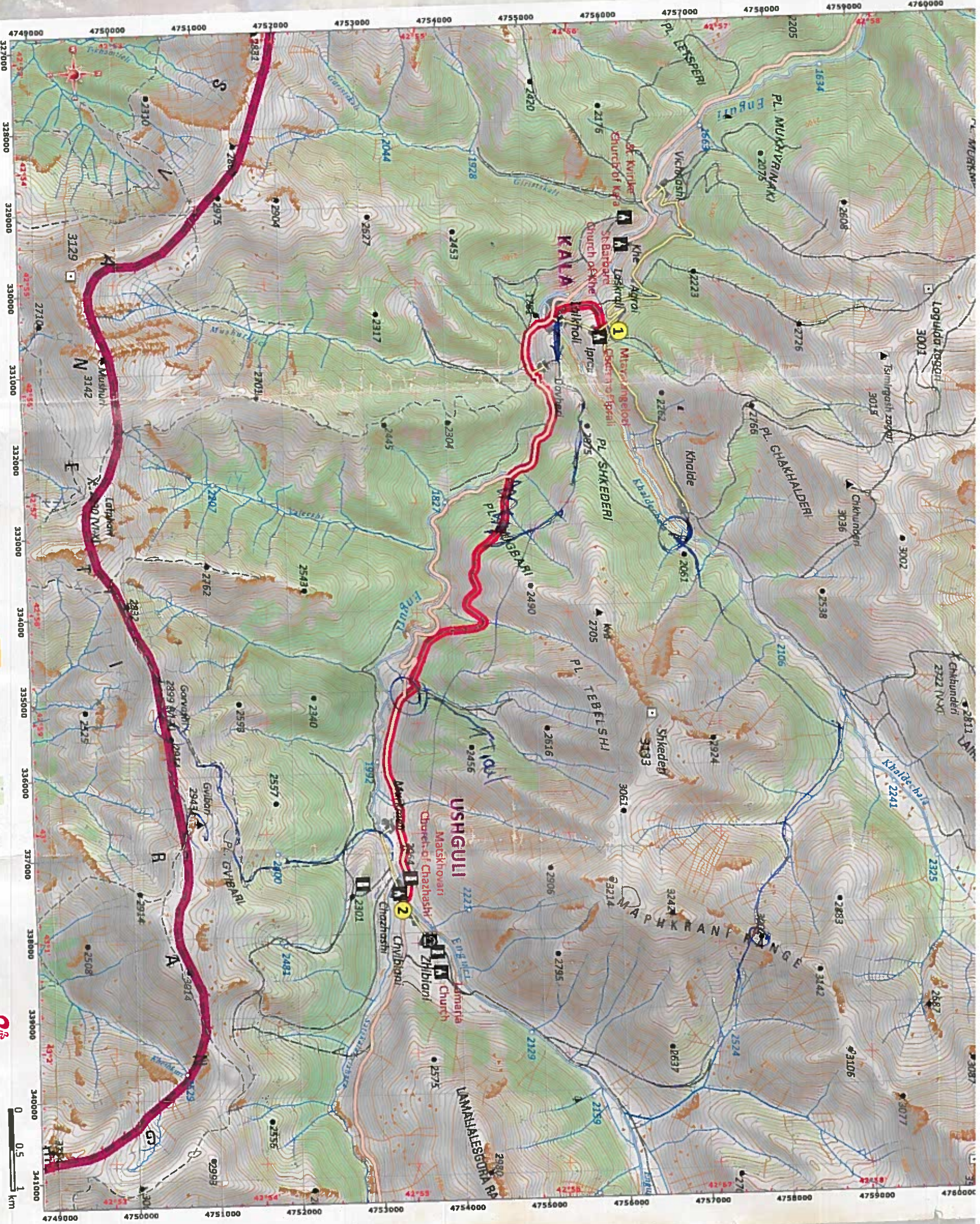
Type of road: Local unpaved road, pathway

Recommended season: 1 of June to 30 of October

Marks: on the trees, on the stones, on the rocks



- 1 Iprali village
- 2 Ushguli



- National Road
- Local Paved Road
- National Unpaved Road
- Local Unpaved Road
- Street/Road in Settlement
- Dirt Road
- Forest Road
- Pathway
- River
- Intermittent River
- State Boundary
- Regional Boundary
- Orthodox Church, Monastery, Tower, Museum, Airport
- Pass With Elevation (m) and Opening Period
- Summit (m)
- Elevation (m)
- Defined Point and Marker
- City Area
- Bushes

The Tourist product is prepared by "Svaneti Tourism Centre" Union

This product should be printed out in agreement with the Center

